



POLY CHAIR
design michaël kruijne

drisag

Office Inspirators
since 1970



FORM / FUNCTION [fabulous]

Humans are wonderful beings with intricately complex bodies. The pursuit of comfortable seating has often led to complexity and an excessive use of foam in an attempt to support our organic shapes.

In contrast, the concept behind the poly chair took a journey towards simplicity. It aimed to capture the essence of the ideal organic seating shell using low-poly shapes. This approach results in several facets that are positioned at angles to each other, approximating an ergonomic shell-like seat.

The poly chair, featuring an extended armrest inhabits the intriguing intersection between relaxation and productivity.

It supports the active and dynamic work environments that we are evolving towards, both at home and in the office.

michaël kruijne - designer

PRODUCTION [transforming energy]

Simple & small components lead to an optimized production process, generating minimal excess materials. The core concept is centered around enhancing material efficiency and promoting circularity.

Foam elements can maintain a sleek profile due to the angular orientation of the wooden parts on the frame, which already contributes to the seating comfort. These foam elements are affixed to the wooden parts using double-sided tape, facilitating easy detachment. Materials that are easily separable are crucial for achieving complete recycling or reusing at the end of the product's lifespan

To facilitate uncomplicated repairs for the chair, all seating elements are bolted to the metal frame, allowing for easy individual detachment when needed.

The poly chair is available in two versions: The "RE" emphasizes recyclability and post-lifespan reuse, while the "UP" focuses on utilizing leftover materials for reuse.





RESIDUAL POWDER



POLY CHAIR : UP [cycle]

Upcycling fundamentally transforms our relationship with both consumption and waste.

The "UP" version exemplifies this ethos by optimizing the utilization of processed waste and residual materials.

Wood components are meticulously crafted from discarded office tabletops.

Metal parts receive a 100% leftover powder coating, the color leans towards shades of grey, with potential variations.

Upholstery is sourced from surplus textiles, further minimizing waste. Color selection can adhere to specific tint ranges or embrace a completely random assortment.

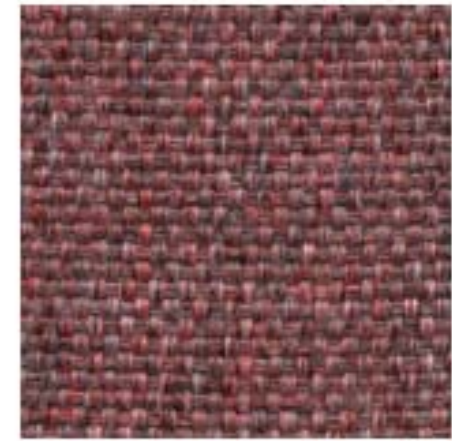
By reconsidering our perspective on residual materials, we uncover the potential for them to serve as invaluable resources. It's imperative that we recalibrate our approach to these remnants, breathing new life into them and seamlessly integrating them into the supply chain as novel raw materials.



POLY LOUNGE CHAIR / TABLET : UP



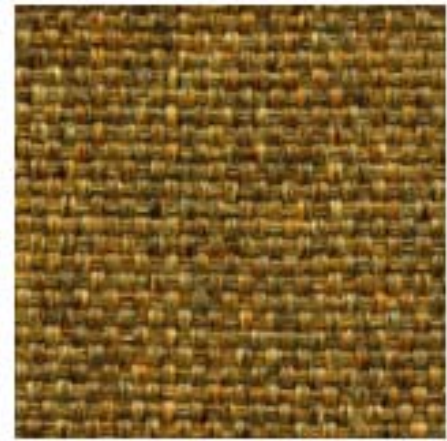
LEFTOVER TEXTILES



Coralline
1294



Sea Spray
1290



Triggerfish
1281



Sargassum
1296



Red Algae
1285



Surf
1289



Ecosystem
1286



Beachrock
1295



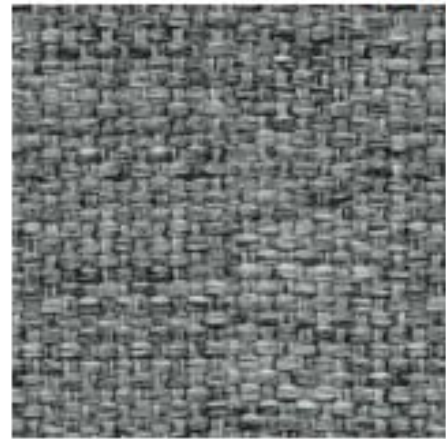
Brittle Star
1284



Aquatic
1291



Kelp Forest
1287



Narwhal
1298



King Crab
1282



Sailfish
1292



Tidepool
1288



Manatee
1299



Archipelago
1283



Deep Blue
1293



Java Sea
1297



Orca
1300

POLY CHAIR : RE [cycle]

The "RE" version is crafted from repurposed discarded materials and incorporates innovative technologies to minimize its environmental footprint at the end of its useful life.

It features FSC-certified formaldehyde-free plywood and incorporates a coating of 50% leftover powder on its metal parts, allowing for color tinting.

The upholstery is made from biodegradable recycled textiles, (Clean Impact Textiles by Duvaltex).

This involves a blend of upcycled ocean waste plastic with post-consumer recycled plastics, resulting in a sustainable material available in a diverse palette of 20 colors.

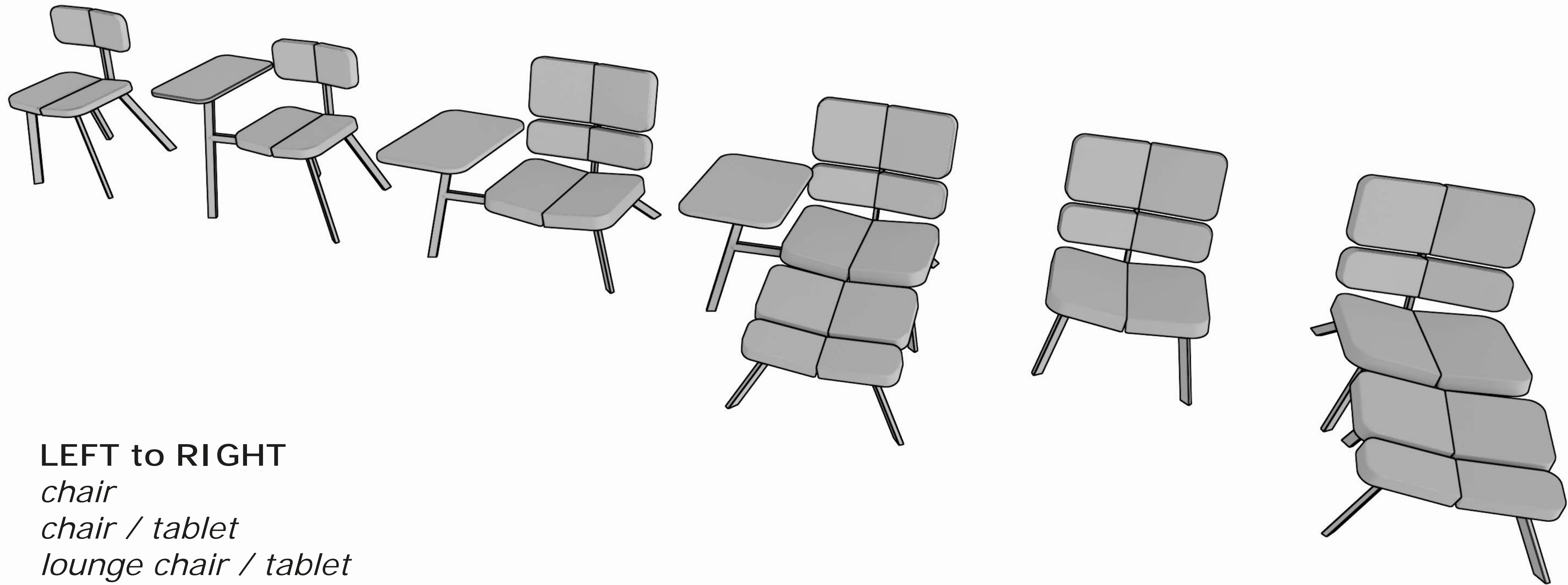


OCEAN WASTE TEXTILES



POLY CHAIR : RE

POLY : FAMILY [is important]



LEFT to RIGHT

chair

chair / tablet

lounge chair / tablet

lounge chair / tablet + ottoman

lounge chair

lounge chair + ottoman

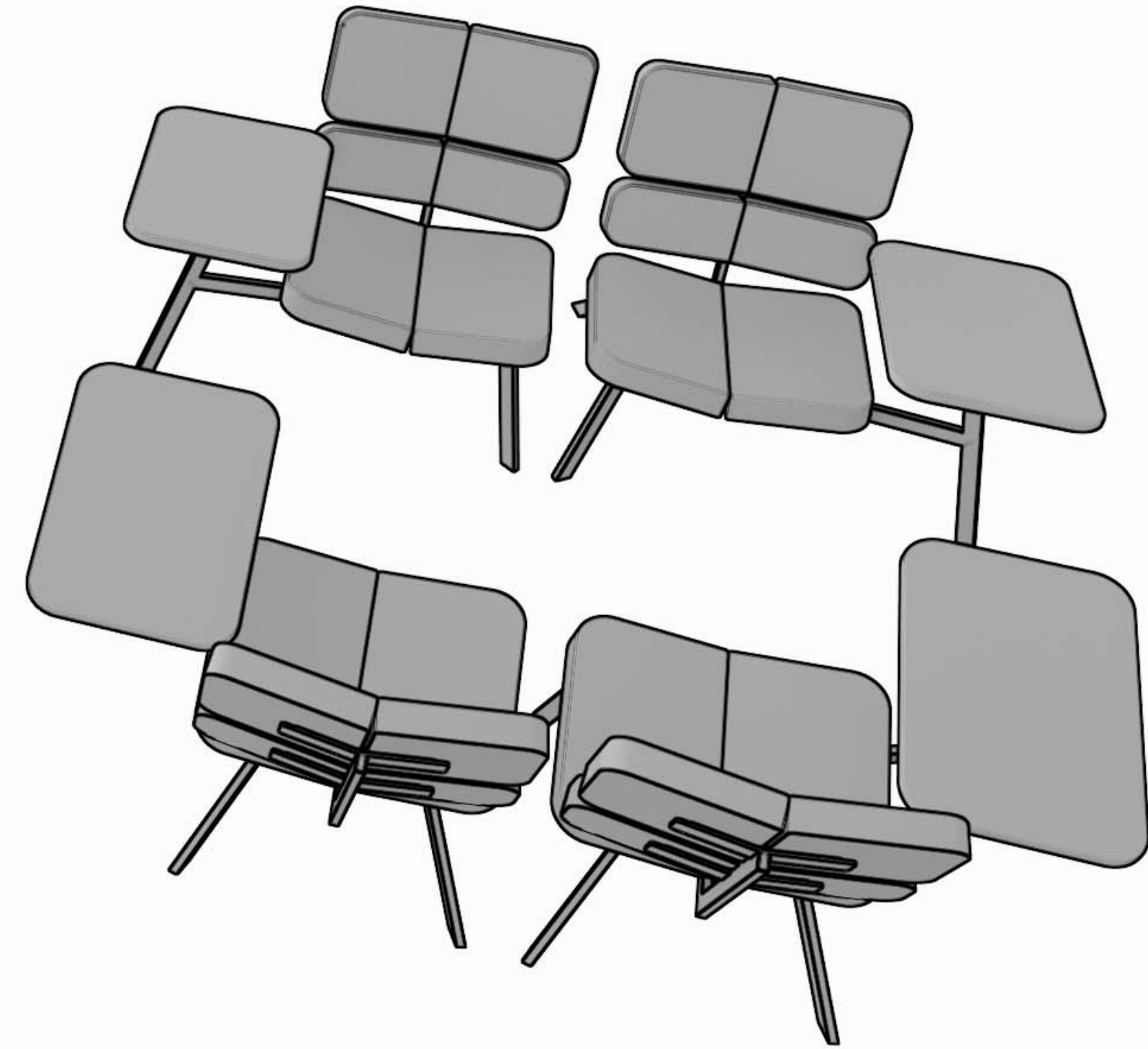
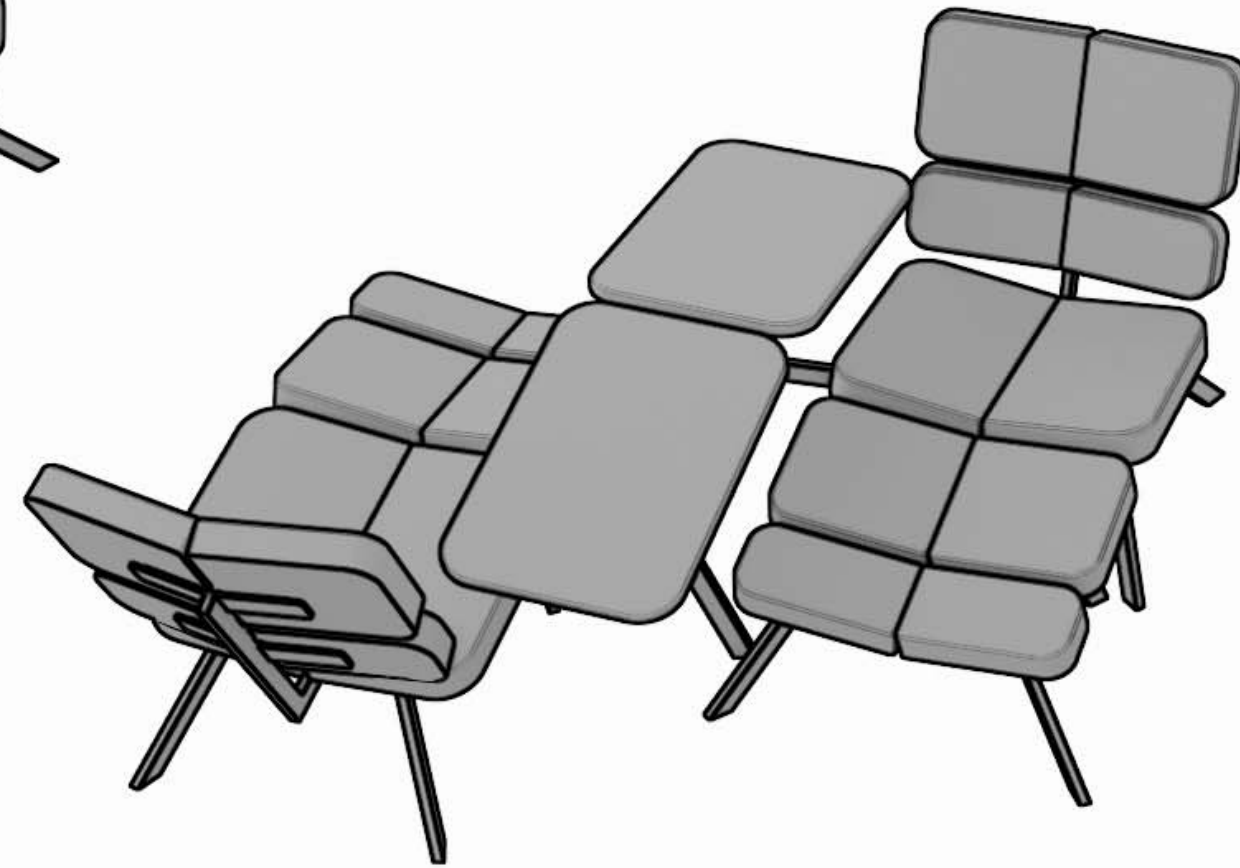
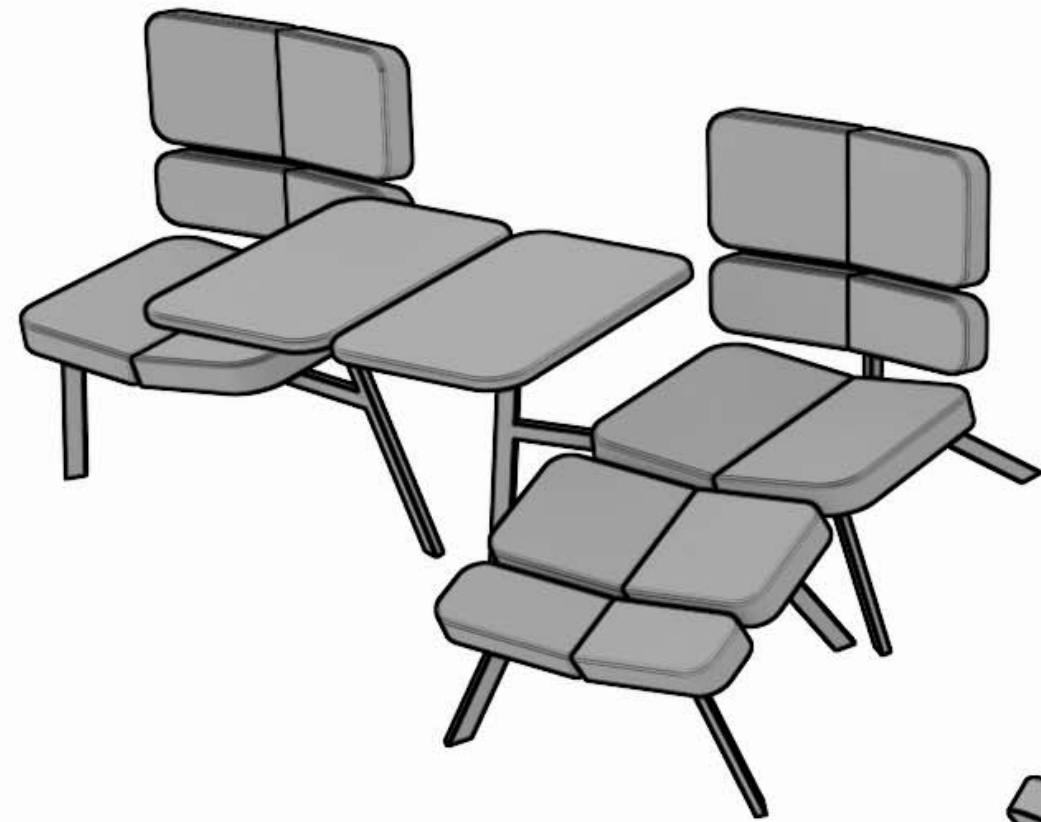


POLY LOUNGE CHAIR / TABLET : UP



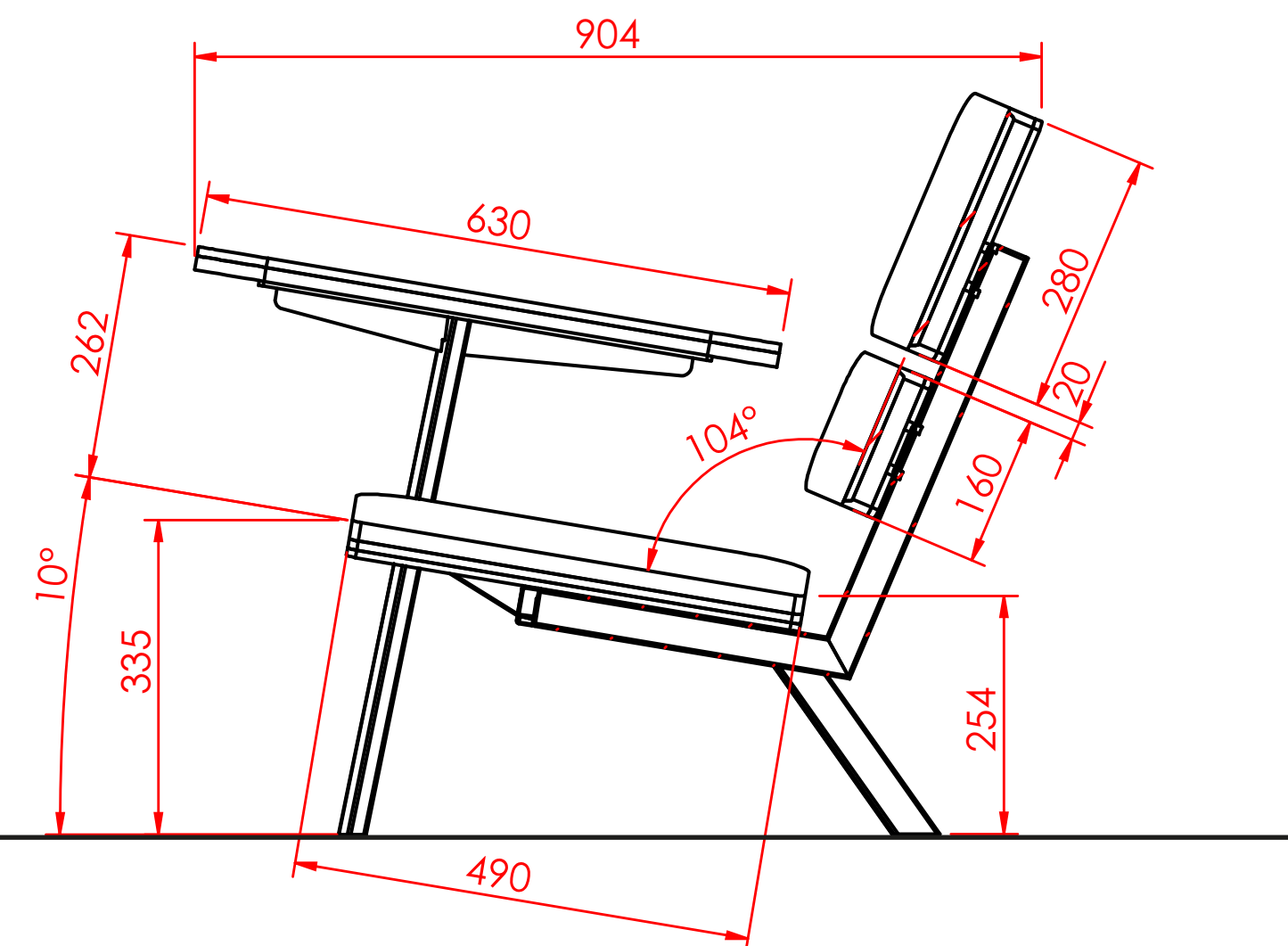
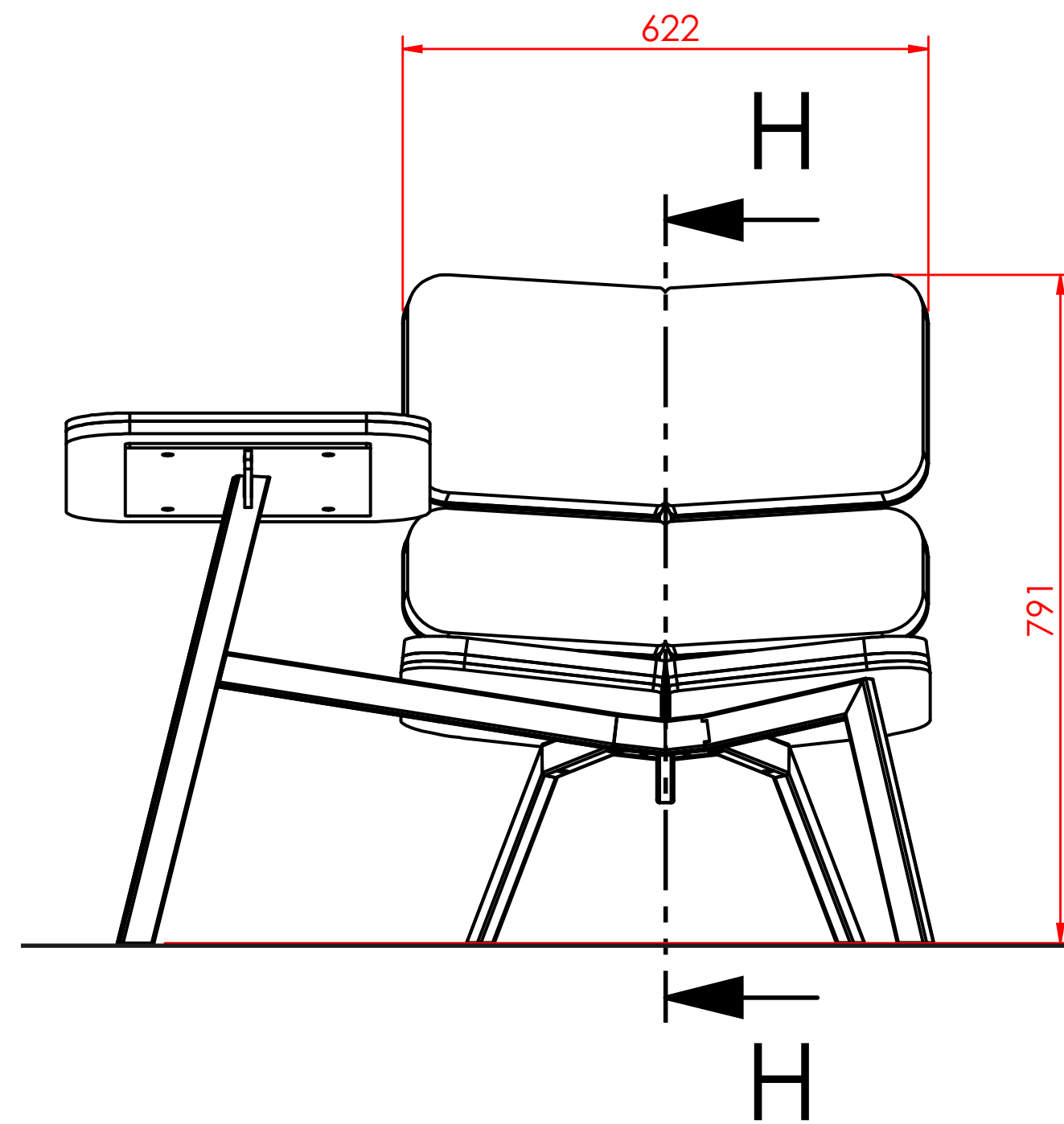
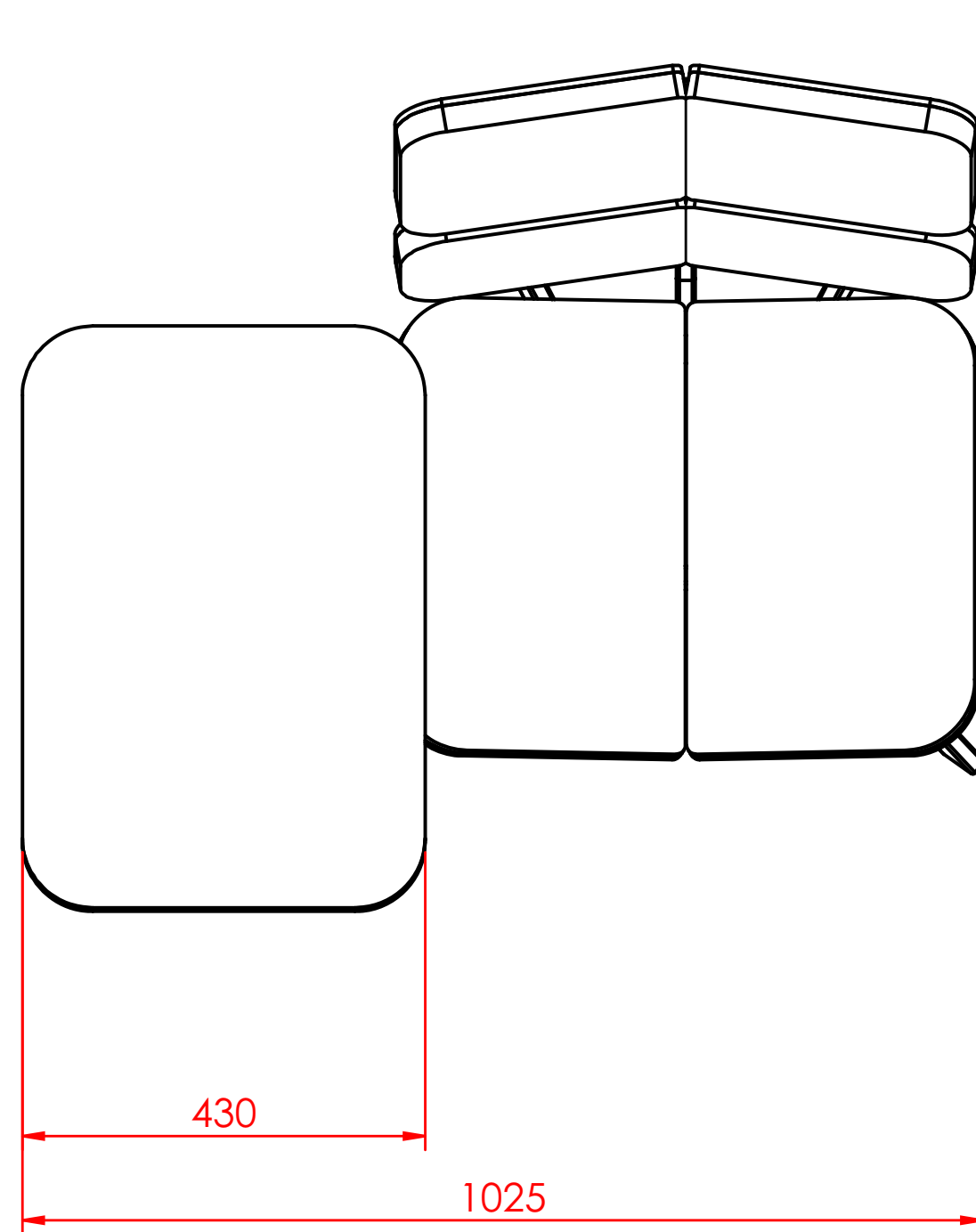
RESIDUAL POWDER COATING

POLY : COMBOS [are majestic]



LEFT to RIGHT
the first date
the binge
the hideout

LOUNGE CHAIR / TABLET [work smarter]

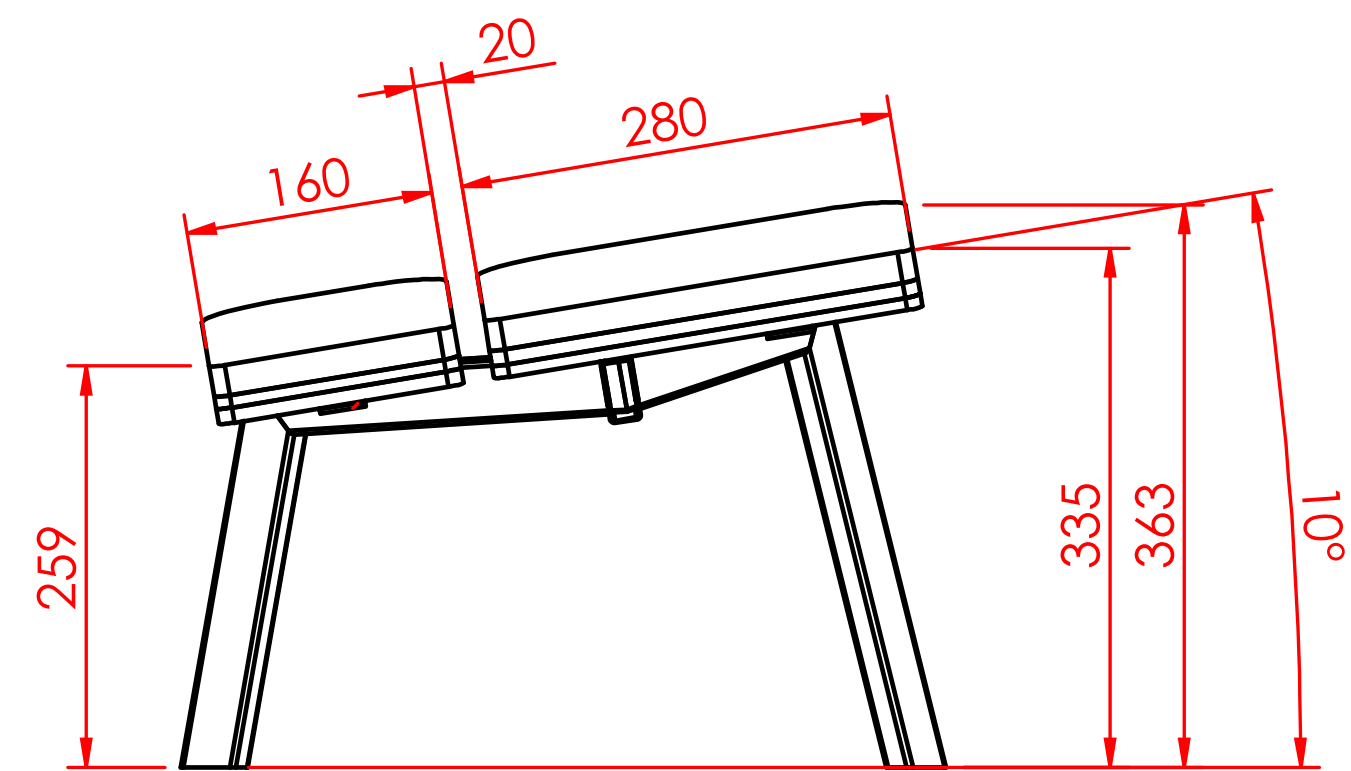
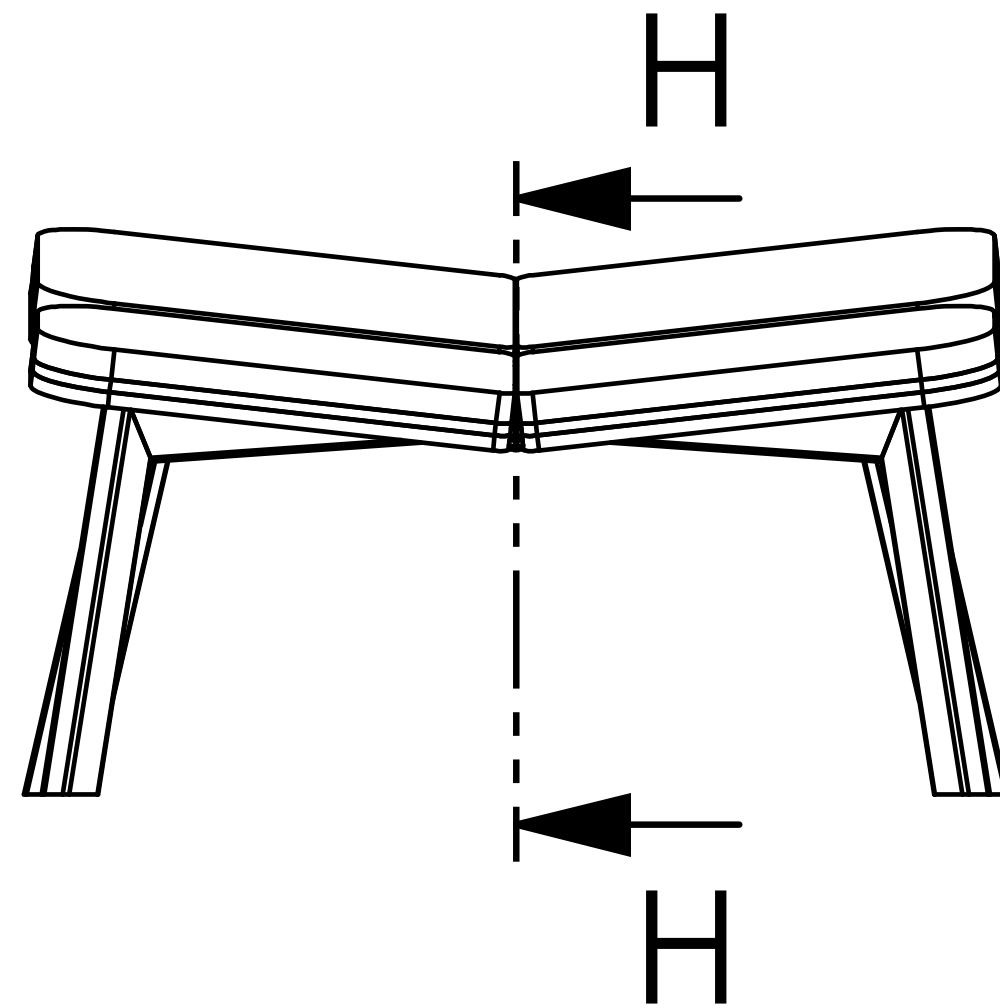
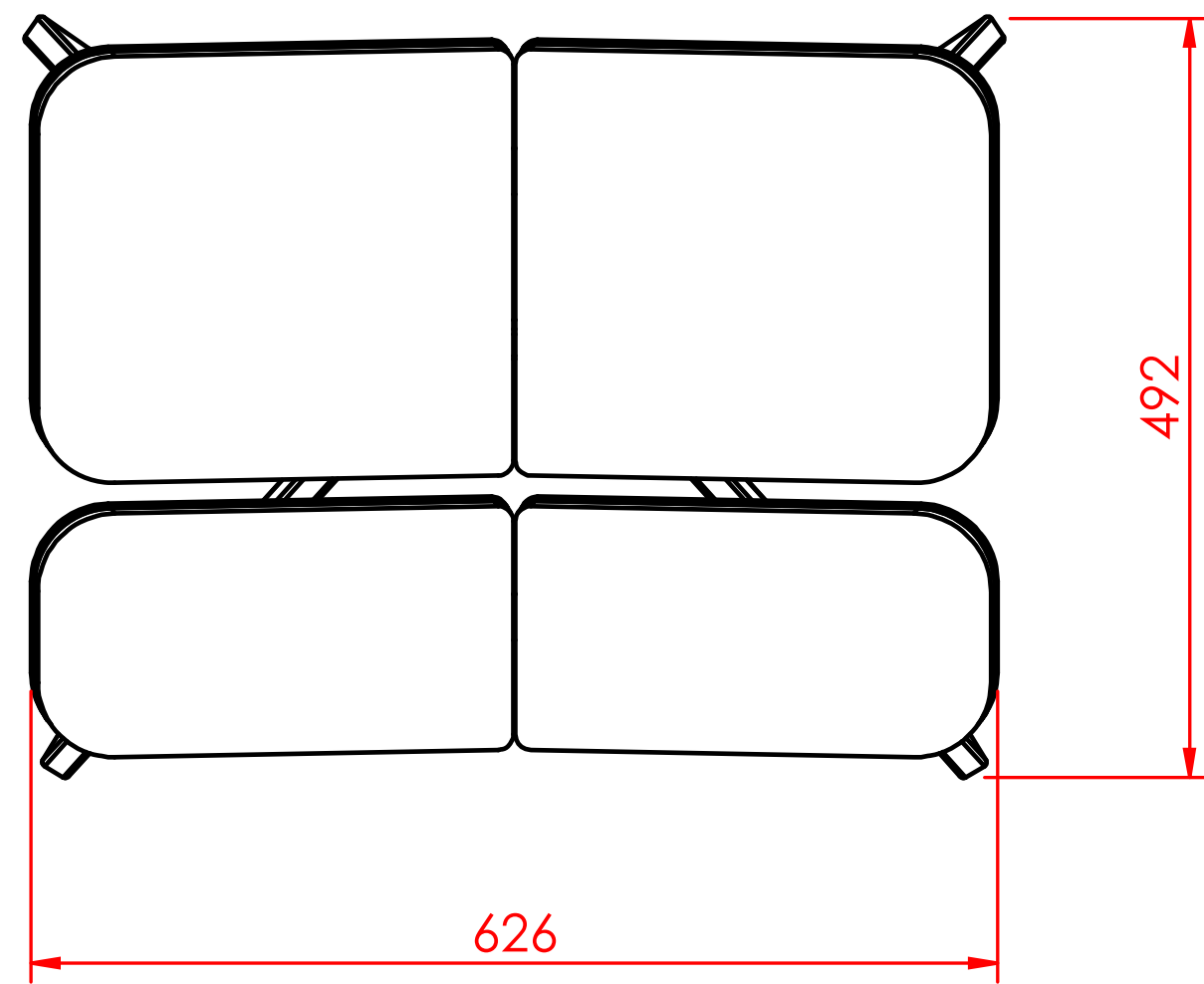


SECTION H-H

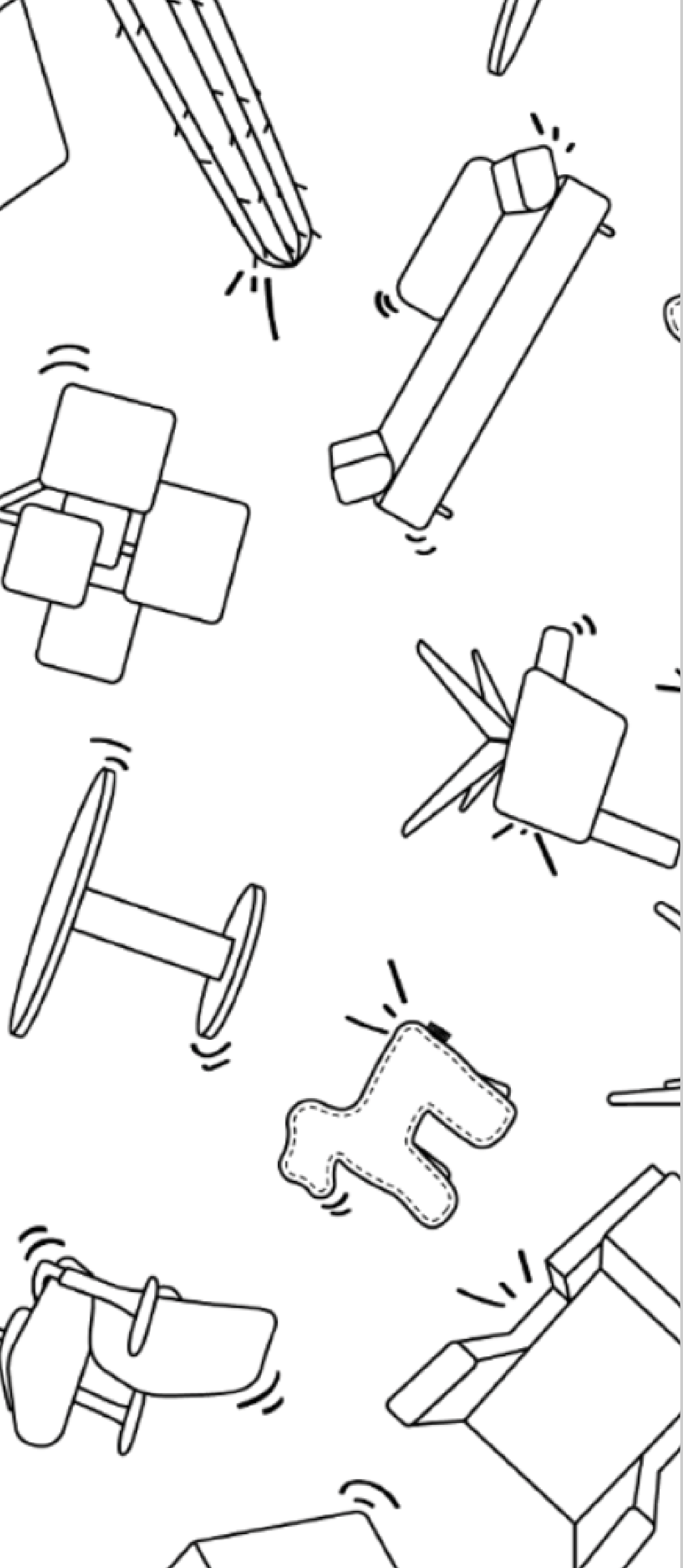


POLY LOUNGE CHAIR / TABLET + OTTOMAN : UP

OTTOMAN [we have liftoff]



SECTION H-H



DRISAG [exquisitely made in flanders]

Through local production and a traditional upholstery process, DRISAG the leading upholsterer in Flanders, is capable of effectively embracing the circular concept of the 'poly' chair.

From factory to customer, the aim is to reduce the ecological footprint in a broad sense. The short supply chain not only minimizes transport, but also allows direct communication between the customer and the manufacturer, thereby simplifying the logistics of furniture reuse and repair.

Drisag is certified with ISO 9001 and ISO 14001. The management of Drisag is committed to taking all necessary actions to optimize the quality and environmental management system, striving for continuous improvement.

Visit www.drisag.be for more information.



drisag

Office Inspirators
since 1970



drisag
Diamantstraat 8
2200 Herentals

welcome@drisag.be
+32 14 23 11 11

drisag

Office Inspirators
since 1970

